



# **Yonex Luxembourg Open 2022**

INVITATION

**International Series**

**5 - 8 May 2022**



Part of the badminton Europe Elite circuit



---

## General Informations

---



---

## Organization

FELUBA

with the collaboration of European club  
and Badminton europe

---

### Venue

D'coque  
2 rue Léon Hengen  
L-1745 Luxembourg  
5 Yonex courts  
2 trainings courts in the same venue

### Key dates

January 26<sup>th</sup>, 2022

Entry start time

April 5<sup>th</sup>, 2022

Entry Deadline

April 18<sup>th</sup>, 2022

Withdrawal deadline

April 19<sup>th</sup>, 2022

Draw date

April 19<sup>th</sup>, 2022

Accreditation, transport deadline

---

### Website

<http://luxopen.badminton.lu>

### Official documents

[https://luxopen.badminton.lu/?page\\_id=414](https://luxopen.badminton.lu/?page_id=414)

### Tournament Shuttle

Yonex AS50

### Official accommodation

Novotel Luxembourg Kirchberg  
Mama shelter

### Training Courts

At the D'coque from Wednesday 18:00 to Sunday 12:00

Booking for 30 minutes with our booking form to

[accommodation@badminton.lu](mailto:accommodation@badminton.lu)

## Contact

Adrien Guignard

+352 661 446 446

[luxopen@badminton.lu](mailto:luxopen@badminton.lu)



---

## Provisionnal schedule

---

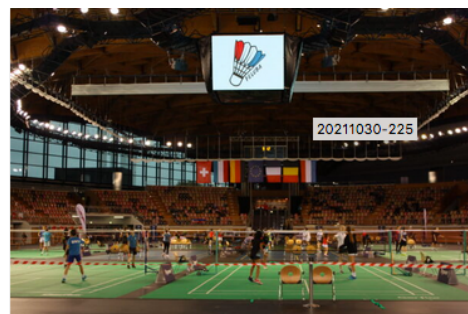
<u>Wednesday May, 4<sup>th</sup></u>	19:00 Manager Meeting
<u>Thursday May, 5<sup>th</sup></u>	09:00- 22:00 Qualification rounds
<u>Friday May, 6<sup>th</sup></u>	09:00- 15:00 First rounds
<u>Friday May, 6<sup>th</sup></u>	15:00- 22:00 Second rounds
<u>Saturday May, 7<sup>th</sup></u>	10:00- 14:00 Quarter Finals
<u>Saturday May, 7<sup>th</sup></u>	16:00-20:00 Semi Finals
<u>Sunday May, 8<sup>th</sup></u>	10:00- 14:00 Finals

Time schedule can be subject to changes, it will be published 20 days before the start of the tournament on our website with the approval of the referee.

---

## Managing Team

<u>General Manager</u>	Adrien GUIGNARD <a href="mailto:luxopen@badminton.lu">luxopen@badminton.lu</a>
<u>Secretary</u>	Christiane KASEL <a href="mailto:secretary@badminton.lu">secretary@badminton.lu</a>
<u>Treasurer</u>	Jean-Marc Hild <a href="mailto:finance@badminton.lu">finance@badminton.lu</a>
<u>Transport</u>	Stephane Schockmel <a href="mailto:transport@badminton.lu">transport@badminton.lu</a>
<u>Accommodation</u>	Samuel LAU <a href="mailto:accommodation@badminton.lu">accommodation@badminton.lu</a>
<u>Volunteers</u>	Robert SMIT <a href="mailto:volunteers@badminton.lu">volunteers@badminton.lu</a>
<u>Public relation</u>	Maria LOIDA <a href="mailto:media@badminton.lu">media@badminton.lu</a>
<u>Catering</u>	Ginette MULLER <a href="mailto:catering@badminton.lu">catering@badminton.lu</a>



---

## Bank Details

Bank	BCEE spuerkees
IBAN 9000	LU51 0019 1100 7952
BIC/SWIFT	BCEELULL
Account owner	FELUBA

---

## Technical Staff

Referee            John Op Het Veld  
[johveld@badminton.nl](mailto:johveld@badminton.nl)

Deputy referee.   Patrick Warning  
[Patrick.warning@feluba.lu](mailto:Patrick.warning@feluba.lu)

Match Control    Adrien Guignard  
[Adrien.guignard@feluba.lu](mailto:Adrien.guignard@feluba.lu)

# Informations

## EVENTS

The draw sizes of the main events will be as follows: 32 MS, 32 WS, 24 MD, 24 WD and 24 XD. The M&Q Report will be published on April 8<sup>th</sup>, 2022, and will be based on the World Ranking dated April 5<sup>th</sup>, 2022

## Entry fees

Singles, per competitor € 50,00

Doubles, per competitor € 40,00

## Prize Money

The total prize money of US\$ 4.700 (equivalent to € 4.400 on December 31st, 2021); exchange rate of 0,87943) has been divided as follows among the events. This year it is divided per 2 as the regulation § 10:

	MS	WS	MD	WD	XD
<b>Winner</b>	440	440	528	528	528
<b>Runner up</b>	242	242	308	308	308
<b>Semi-finalist</b>	132	132			

\*Per pair

These prizes will be paid in EURO in cash at the prize giving ceremonies. No taxes will be deducted.



## Online entries

All entries must be made by members through the BWF Online entry system:

<https://bwf.tournamentsoftware.com/tournament/69F5DA41-7EC5-4E31-8298-9D47D2C1752F>

If needed, Members can obtain the required username and password from BWF's Senior Events Officer:

[s.ramachandran@bwf.sport](mailto:s.ramachandran@bwf.sport)

Entry deadline is Tuesday April 5<sup>th</sup>, 2022-17h59 (+02h00GMT).

**No late entries will be accepted.**

## Accreditations :

During the tournament you will need an accreditation to access to the tribune, training, court, coach or player space. Please fill out the accreditation via the accreditation form, send it back to

[accommodation@badminton.lu](mailto:accommodation@badminton.lu)

before the 19<sup>th</sup> April





---

## Accommodation

---

### The Novotel Luxembourg Kirchberg

6 Rue du Fort Niedergruenewald, 2226 Luxembourg

+352 42 98 48

### The Mama Shelter

2 Rue du fort Niedergruenewald, 2226 Luxembourg

+352 20 80 44 00

**All booking rooms must be booked by the organization itself. You have to send us your request before the 10<sup>th</sup> April.**

Information needed regarding accommodation, please address it in an email message to the tournament's accommodation manager ([accommodation@badminton.lu](mailto:accommodation@badminton.lu)).

It will be possible to book in the restaurant of the venue or in the hotel some meals for Dinner or lunch time. We will provide your more information in our website.



### VISA procedure

Competitors and officials who need Visa for the Luxembourg, should send the Visa application form not later than March 15th, 2022, to the tournament secretary ([secretary@badminton.lu](mailto:secretary@badminton.lu)). We will not accept entries needing visa without such an application. The Visa application form is on our website all informations ask should be provided.

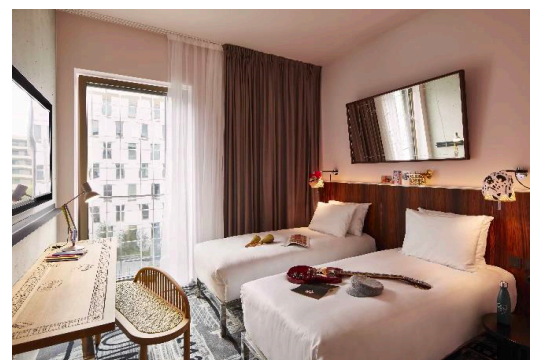
Tournament room prices (including breakfast, tourist fees, free fitness and free WIFI) (same price for both hotels)

- single bedroom €135 per night
- double bedroom €155 per night
- Novotel suite €145 per night single occupation
- Novotel suite €165 per night Double occupation

Price for at least 2 nights

Please Book before April 10<sup>th</sup> by sending us an email at [accommodation@badminton.lu](mailto:accommodation@badminton.lu) with all details needed.

Players and coaches will have to pay the rooms and additional expenses directly to the hotel



## Accommodation

### The Novotel Luxembourg Kirchberg

6 Rue du Fort Niedergruenewald, 2226 Luxembourg

### The Mama Shelter

2 Rue du fort Niedergruenewald, 2226 Luxembourg



### From the airport to the venue

We will provide a free shuttle from the Findel airport (LUX) to go directly to the venue or the Hotel from our hotel list. We will let on representative from the tournament at the airport. Please fill out the form in the transport form if you need the shuttle, send it by email to [transport@badminton.lu](mailto:transport@badminton.lu) before April 19<sup>th</sup>, 2022

### From the Main train station to the venue

We will let on representative from the tournament at the main station. He will show you the way to the venue with the tramway. You will need 15 minutes to reach the venue.

### From the hotel to the venue

During the tournament there will be no shuttle service with Minibus organize. Players and coachs can take the free tramway. You will walk less than 300 meters to take it “Europapaparlament parlement européen” an then only one stop “d’coque” to be at the venue.

There is a tramway every 4 minutes.

You can also go by walking it is 750 meters less than 10 minutes.



---

# COVID-19

---

## Conditions

The tournament will be organized according to the Covid-19 measures present at that time. Towards the tournament we will regularly update the information available on our website.

---



## Sanitary measures

<https://covid19.public.lu/en/sanitary-measures.html>

## Travel regulations

<https://covid19.public.lu/en/travellers.html>

---

## Cancellation

Should the event be cancelled with short notice due to the covid beyond the control of the Luxembourg badminton federation or badminton Europe neither of them will be liable for any costs related to travelling and accommodation.

## Sanitary protocole

A sanitary protocol will be provided to you two weeks before the tournament on our website and by email.





---

# REGULATIONS

---

## General

The tournament will be played in accordance with the Laws of Badminton, the BWF General Competition Regulations and Badminton Europe Elite Circuit Regulations. In case of any dispute, the Referee's decision shall be final. Member and/or organizer may be liable for claims originating from the damages incurred by the participants and/or any other persons, arising from or in connection to the particular BEC tournament, according to local Law. Badminton Europe is not liable for any such claims, actions, damages, costs or expenses of any nature whatsoever, including but not limited to injury or loss to person or property, arising out of or in any way related, directly or indirectly, to the particular BEC tournament. It is recommended that Members and/or Organizers purchase a proper Insurance Policy that would cover their potential legal liability (see Elite Circuit Regulation 3.6). The organizing Member can cancel a tournament in case of force majeure. Such cancellation must be announced at least 15 days before the start of the tournament. If a cancellation is announced less than 15 days before the start of the tournament, then the Member organizing the tournament is liable for any expenses incurred by third persons (players, coaches, umpires, team managers etc.). Badminton Europe is not liable for any costs incurred by third persons because of a cancellation of a tournament (see Elite Circuit Regulation 3.4).

---

## Entry

After the deadline, the BWF Online Entry System will send a notification confirming receipt of final entries to all participating Members. Receipt of this notification is the conclusive evidence of receipt of entries before the deadline. Compliance with GCR 7.9: "In making or authorising entries, the Member concerned is reconfirming its acceptance, and acceptance by the Players being entered, of the BWF's regulations and Disciplinary processes

## Draws

Seeding and draw will be done by Badminton Europe, based on the World Ranking dated April 12th, 2022.

The draw will be made by Badminton Europe, on Tuesday April 19th, 2022.

Any withdrawal after the Monday immediately preceding the draw (April 18th, 2022), for any reason whatsoever, renders the Member concerned liable to an amount of US\$ 150,00 for the inconvenience caused by the withdrawal (as defined in BWF General Competition Regulations)

Any player not showing up at the tournament, without having been withdrawn in advance, renders the Member concerned liable to an additional amount of US\$ 500,00 for the inconvenience caused by the "no show" (as defined in BWF General Competition Regulations).

---

## Clothing and advertising

Colour, design, lettering and advertising on clothing shall be regulated by BWF General Competition Regulations § 20 to 24. Any breach of these regulations will be forwarded to BWF. It is mandatory that partners in doubles wear the same colour of the T-shirt and shorts/skirts at all time during play in both the qualification and the main draw. Failing to do so shall result in an administrative fine of 100,00 EUR.



# REGULATIONS

## Match Conditions

- Competitors must be prepared to play at the times quoted in the Order of Play for the events for which they have entered. No exception shall be made to this rule.
- Matches will be played according to BWF laws.
- The period for knocking-up before any match shall not exceed 3 minutes.
- Testing for the use of drugs can be conducted throughout the tournament. Doping control in badminton, in accordance with BWF Anti-Doping Regulations, is conducted out-of-competition and in-competition with the collection of urine and/or blood samples. Athletes are responsible for any substance found in their body. Before an athlete takes any medication, they should check with their doctor, and if necessary, get a Therapeutic Use Exemption (TUE). For more information about anti-doping, please visit the BWF website:  
<https://corporate.bwfbadminton.com/integrity/anti-doping-overview>
- During the event, stringing service will be present

## Standard rules

In accordance with regulation § 9.2 and § 9.3 in BWF Statut Section 5.3.3.1: World Ranking System, an event must contain least 8 (eight) competitors in the first published version of the main draw. If the required number of competitors is not met in the first published version of the main draw, this particular event shall count towards any ranking, i.e. BEC Elite Circuit Ranking and BWF World Ranking. In accordance with regulation § 9.4 in BWF Statut Section 5.3.3.1: World Ranking System, the first published version of the main draw of an event must contain at least 1 (one) entry from a Member other than the hosting Member. If an event does not contain at least 1 (one) entry from a Member other than the host Member, this particular event shall not count towards any ranking.

Badminton Europe is not liable for any costs incurred by third persons (players, coaches, umpires, team managers etc.) because of an event not having enough competitors to count for world rankings (see Elite Circuit Regulation 3.3).

Members will be acknowledged as to which of their entries have been accepted into the Main Draw, which are required to qualify, and which are on the lists of reserves.

## Departure

Players shall not plan their departure less than 2 (two) hours after their last match is planned to conclude. If a player is unable to compete due to early departure, he/she will be penalised by Forfeiture of reward (removal or Elite circuit ranking points and shall not be awarded prizes or prize money). Badminton Europe shall propose to BWF that the gained BWF ranking points are also removed.

Please ensure that the Secretary of the Committee of Management is informed immediately when a player has to withdraw, preferably together with the reason.

## Entry fees

The Member that enters a player into a BEC tournament is responsible for paying the entry fees for that player. The entry fees become due if a player is entered and has not been withdrawn when the entry deadline passes. Please note that entry fees will not be refunded in case of withdrawal after April 5<sup>th</sup>, 2022 (see Elite Circuit Regulation 17.1).

The entry fees will not be refunded in the case of a withdrawal. For all the withdrawn players the organizers can invoice the entry fee to the relevant Member (see Elite Circuit Regulation 17.2).

Entry fees must be paid before a competitor plays his first match in the tournament.

The fees must be transferred to our BCEE Bank account. Please indicate clearly for which player(s) payment is being made

## Code of Conduct in Relation to Betting, Wagering and Irregular Match Results

Relates to anti-corruption and anti-match manipulation, and this code applies to all participants at this tournament.

To protect the integrity of BWF sanctioned tournaments, participants are not allowed to bet in any way on badminton matches, respect the principle of fair play, and shall not attempt to influence the course or result of a game or match.

Every person has an obligation to report to the BWF any approaches by anyone to gather inside information or to change the outcome of a match.

For more information, please refer to BWF's website:  
<https://corporate.bwfbadminton.com/integrity/anti-match-fixing-overview/>



# Luxembourg

# OPEN



**Badminton Tournament**  
with the participation of the top players of the world



2022



**LU<sup>+</sup>EMBOURG**  
LET'S MAKE IT HAPPEN

May 5 — May 8

**LU<sup>+</sup>EMBOURG**

LET'S MAKE IT HAPPEN



[www.badminton.lu](http://www.badminton.lu)

